



Multipurpose Covers



*For every place that you
want to reach or use.*



Technical Characteristics of Covers



Fire Class : C



Thickness : 30 mm



Standart Width (Clear Opening) : 450 mm



Standart Height (Clear Opening) : 800 mm



Available Dimensions (Maksimum) : 450 x 1.600 mm



Coating Sheet Thickness : 0,6 mm



Finish : PVC, GLV, PSL



PVC Film : PVC film is “low flame spread” certificated.



Insulating Material : Mineral Wool - Rockwool / Denmark



Density of Rockwool : 130 kg/m³

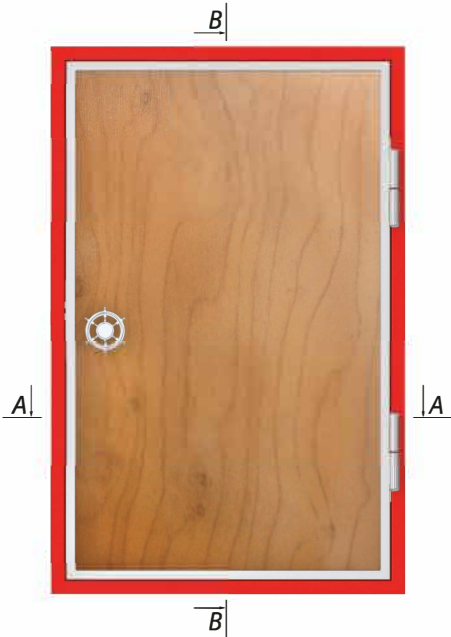


Weight : ~13 kg/pc (450 x 800 mm)

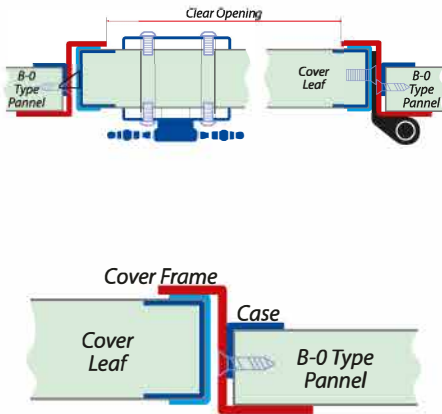


Application : Generally assembled to B-0 type lining pannel. But it is possible to assemble to any kind of bulkhead, wall or ceiling with specific profiles.

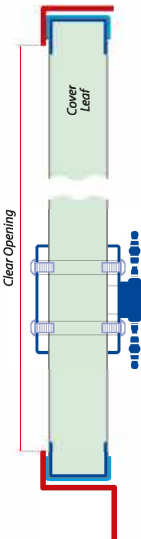
Assembly of Covers



Section A - A



Section B - B



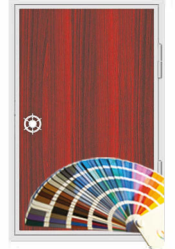
Advantages of Covers



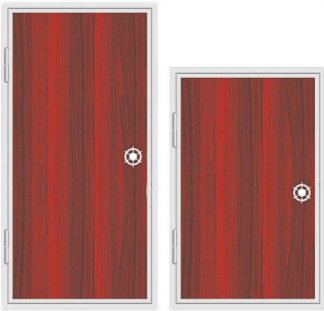
Quick and easy assembly



Cover frames are either Z profile or painted with electrostatic powdered paint.



Rich variety of colour



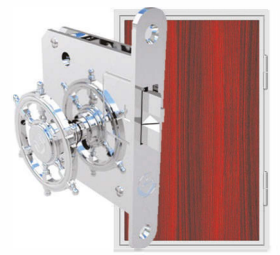
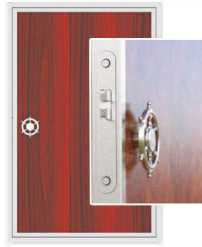
Manufactured in standard dimensions, possible to do tailor-made.



Cover leaf is embarrd with stainless U profile.

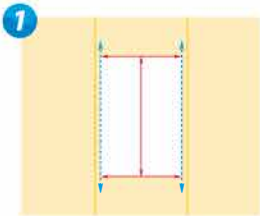


Hinges are manufactured from stainless material as monolith.

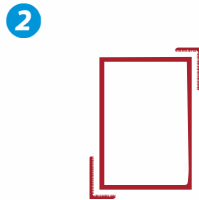


Cover handle and lock is pure stainless material.

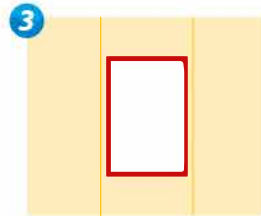
Instruction of Assembly



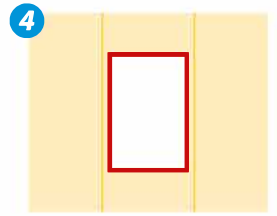
Check dimensions.



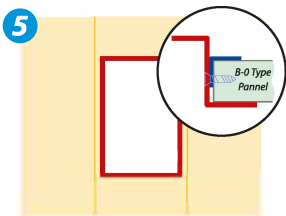
Check set square.



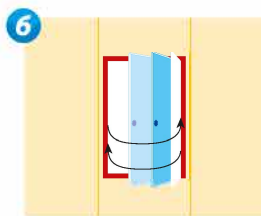
Position the frame in the opening.



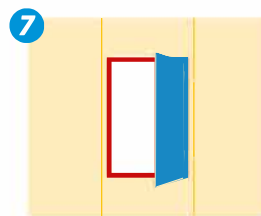
Assemble the case.



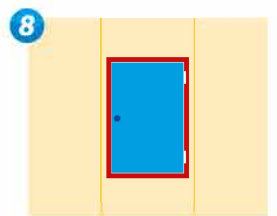
Screw the frame from mounting hole to the case after fastening frame, case and panel together.



Assemble the leaf.



Carry out the final control.



Done.

Areas of Usage



**Fire-hose cabinet
cover**



**Galley service
cover**



**Power installation
cover**



**Chain release unit
cover on tugboats**



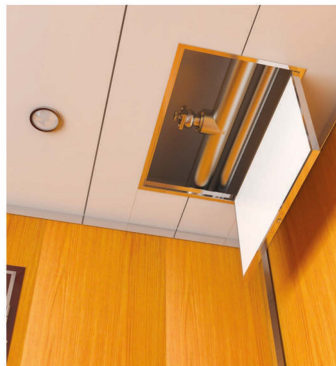
**Whole kit locker
cover**



**Interference lid
cover**



**Ventilation equipment
cover**



**Ceiling
application**



**Built-in cupboard
cover**